



### 37 King Street Concord West NSW

3  2  1 

Appealing to anyone who values location, size, and scope, this potential plus residence presents absolute possibilities for its next owner to refresh, invest, build their forever home, or simply move right into. Delivering a generous 537.5 sqm of land with a 12.19m frontage, it is presented in comfortable order with free-flowing interiors that are spacious and well connected - including outdoor zones designed for entertaining and play.

The possibilities are endless for buyers looking to capitalise on a potential-packed home in a highly convenient part of Concord West with access to Bicentennial Park, Rhodes and Concord central, village shops, retail shopping centres, parks, locals schools, Concord hospital and a stone throw away from Concord West train station.

Features include:

**Land Size** : 537.5 sqm

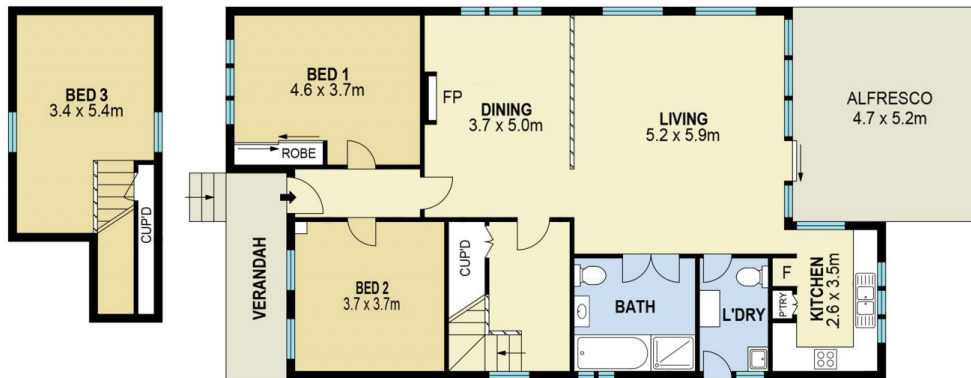
**View** : <https://www.fletcherpg.com.au/sale/nsw/inner-west/concord-west/residential/house/6896164>



**Daniel Fletcher**  
 (02)97198435

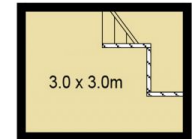


SITE PLAN



FIRST FLOOR

GROUND FLOOR



FIRST FLOOR



GROUND FLOOR



0 1 2 3 4 5

Scale in metres. Indicative only. Dimensions are approximate. All information contained herein is gathered from sources we believe to be reliable. However we cannot guarantee it's accuracy and interested persons should rely on their own enquiries.



37 King Street, Concord West